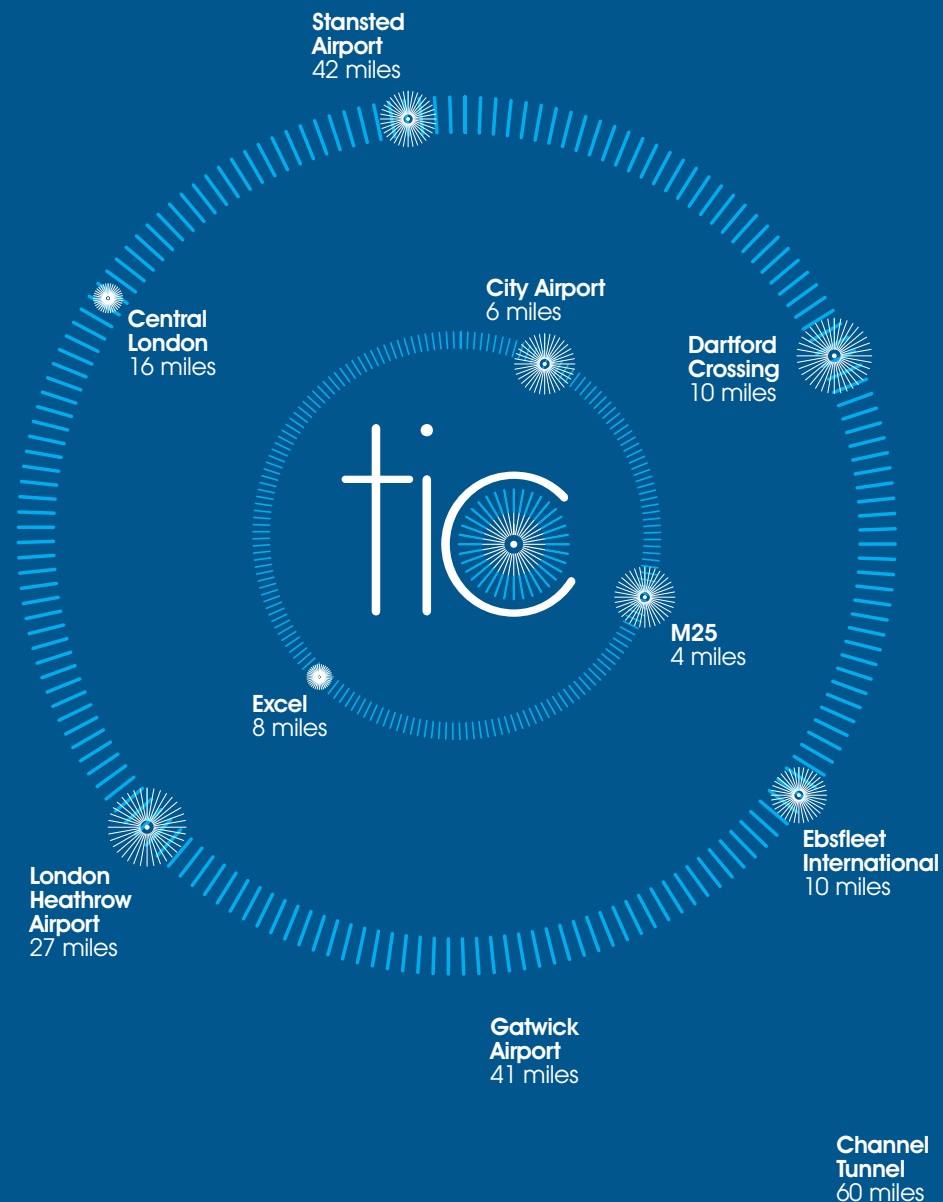


Stunning design, strategic location
Introducing the Thames Innovation Centre: the ultra-modern new business centre located in the London Borough of Bexley in the Thames Gateway.

Comprising state-of-the-art workspaces for high growth potential start-ups and SMEs, TIC is close to major commercial and communication hubs. Central London, the new Ebbsfleet Channel Tunnel rail terminal and London City Airport are close by, whilst Stansted, Luton, London Heathrow and Gatwick airports are easily accessible via the M25.

TIC is a knowledge partnership between Bexley Council, the London Development Agency (LDA), Woolwich & North Bexley Partnership, EU (ERDF Objective 2) and National Government (DCLG).



What TIC offers

- Ultra-modern new offices in Veridion Park, Erith
- Dynamic environment for technology and innovation-led enterprises and other businesses
- On-site business, financial and innovation support from TIC Think Big and TIC Enterprise teams
- Flexible spaces from 215sq.ft (20m²) to 1,701 sq.ft (158m²) including serviced offices, workshops & hotdesks
- State-of-the-art communications, meeting and conference rooms
- In-house business services include access to networking and funding opportunities
- Direct access to technological, academic and intellectual property experts, universities, R&D and other hi-tech companies
- Easy in, easy out rental terms for business flexibility
- On-site facilities including coffee shop, free parking, 24-hour access and security
- A gateway to Central London and Europe due to its close proximity to international train stations and airports

Where innovation happens

London's state-of-the-art workspace for high growth potential businesses

catalytic
 Thames Innovation Centre



Thames Innovation Centre
 2 Veridion Way
 Erith
 DA18 4AL

T. +44 (0)20 8320 1000
 F. +44 (0)20 8320 1011
 info@thamesinnovationcentre.com
 thamesinnovationcentre.com

Freedom to innovate

TIC: a magnet for innovative business
TIC provides a dynamic entrepreneurial environment, created to catalyse business growth. It acts as a magnet for ambitious start-ups and small-to-medium sized enterprises (SMEs) interested in innovation and expansion.

Occupying 50,000 square feet on three storeys, the purpose-built TIC is the landmark building in Veridion Park in Erith, London. Its striking design accommodates workspaces for new and growing businesses in innovation-led sectors including ICT, biomedical, avionics, security and renewable energy.



The Centre also offers cutting-edge services with resident businesses benefiting from first-class commercial, financial and innovation support, plus easy-in, easy-out rental terms that afford the freedom to grow.



In addition, as a member of AIRTO*, TIC acts as a bridge between entrepreneurs, universities and colleges, development agencies and R&D organisations.

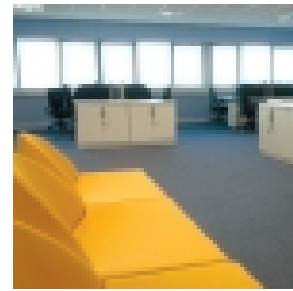
* Association of Independent Research and Technology Organisation

On-site business support
The multi-lingual TIC staff offer practical in-house support to help businesses develop. From expert advice to networking opportunities, the TIC Enterprise and Think Big teams work with your business to help unlock its potential.

TIC Think Big*
 The TIC Think Big team fuses innovation and technology specialists together with financial consultants. Harnessing a collective 90 years' experience, the TIC Think Big team will help you to commercialise your technology or licence-in technology from elsewhere, whilst providing advice on every phase of the development lifecycle from initial idea to production. TIC Think Big team will help you raise public and private finance (R&D grants, loans, seed and venture capital). We do this by helping you write a winning business plan and prepare a successful investment pitch. We will also provide guidance on potential markets, emerging technologies, networking opportunities and business initiatives.

TIC Enterprise
 TIC Enterprise provides business and financial planning, support and advice to start-ups and growing businesses. Services range from mentoring, clinics and seminars, to one-to-one guidance on business loans and grants. TIC Enterprise experts can also connect you with regional business agencies to help widen your networking circles and commercial scope.

*Eligible companies for the Think Big service must reside in an objective 2 region of Bexley, Hackney, Tower Hamlets, Newham, Greenwich, Barking & Dagenham or Havering. Because the TIC is in an objective 2 region of Bexley Borough, tenants of the Thames Innovation Centre are automatically eligible to receive Think Big services.

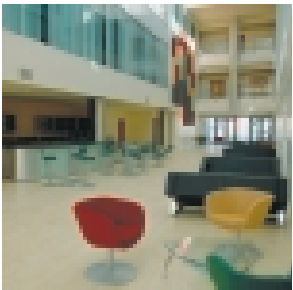


State-of-the-art workspaces
Today's innovative businesses need a new kind of workspace. TIC delivers versatile studio and workshop spaces, lending start-ups and SMEs a Freedom to Innovate.

Working spaces
 Whether you are a start-up, established company or corporate knowledge centre, TIC has a business space to fit. Accommodation includes hotdesks, offices, workshops and studios. All are fully serviced and range from 215 sq ft to 1,701 sq ft. There is also a virtual office service where a permanent presence on site is not required.

Additional facilities
 Comprehensive facilities include a state-of-the-art communications infrastructure encompassing high-speed broadband connectivity and a cutting-edge telephone system. Additional amenities include fully serviced reception, free parking and round-the-clock access and security, further establishing TIC as a flexible and convenient business hub.

Meeting & networking
 TIC offers high-grade meeting and boardrooms as well as conference suites. The stylish rooms accommodate up to 80 delegates and feature LCD projectors, video conferencing and interactive white boards. Supplementary services, such as catering, are also available, whilst the atrium coffee shop provides a further venue for informal networking.



magnetico

Thames Innovation Centre